

# Manual for Multi-function Data Receiver



**Model :** TG1002-DRT

**Size:** 70x130x19.5mm

**Power:** DC9v

**Functions:**

This device is to help to save time for settings. Before you choose to use this device, you shall choose the function in our software as below:(In the "[System Setting](#)")

**System Setting**

Hotel No. 01 Hotel Name: Test Hotel

Default time of checkout: 12:00:00 Room state after checkout: Cleaning Room

From 00:00:00 To 05:30:00 Midnight price check In

Default check out time for midnight Check in time plus 12 Hour(s)

Default checkout time of clock room is check in time plus 2 Hour(s)

☒ Data Receiver Available Compensation time(minute) with IC Card: 5

IC card type: E557 MF1 Area: 15

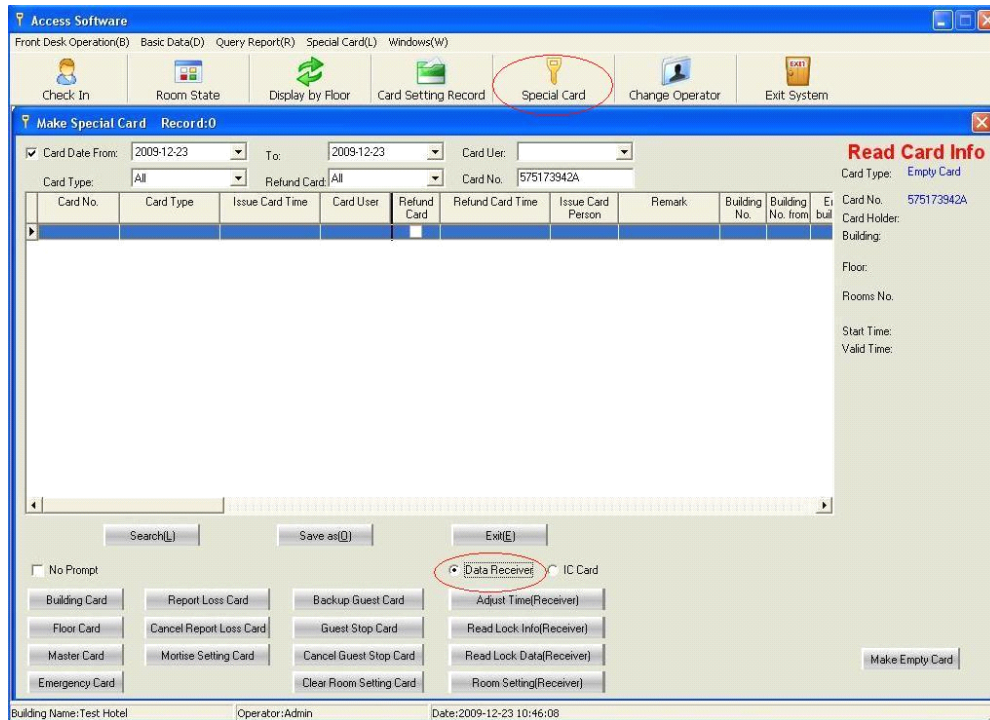
Room state display: By floor Length of room No. 4

☒ Database backup time(Auto): 23:00:00 ☒ Guest card can open the dead Locking

Remark:

OK(Y) Cancel(N)

And choose in the software interface under "[Special Card](#)":



There are some functions as below:

**>1. To Set the ID to Each Lock:** When the lock is for use at the first time, it needs to set the lock ID to be same as the room number in the software. you shall put it on the card reader and issue "**Room Setting Card**" and choose up to 40 rooms each time.

With data receiver, you can set for 40 rooms. When you choose more rooms, you need to set the lock according to the sequence that you chose. Touch the data receiver to the first lock, there is sound for tip: "di-di-", that means the operation is ok. Then you need to touch it again to the lock after the signal light is off, the light only flashes to red but no other response(Second time is to set the time for the lock). Then you can set the next room. This step shall be done before you start to use the lock for normal use.

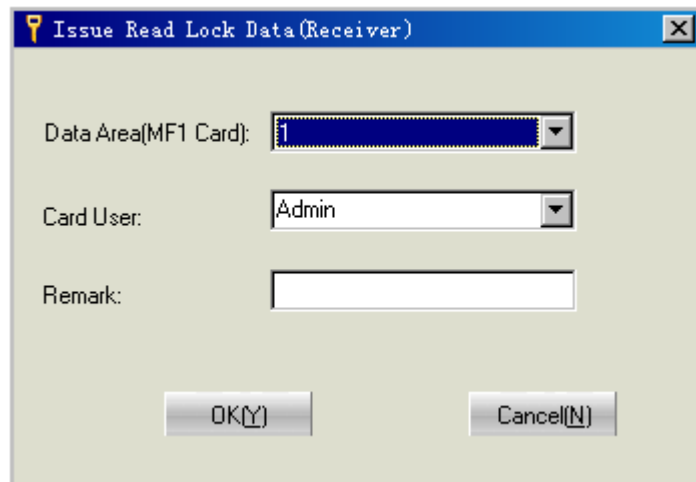
**>2.To Set the Time to the Lock:** This is to set the lock time, make sure the time inside the lock is same with the computer time. If you choose the Data receiver, please refer to the First step. If you want to adjust the time, you shall put the data receiver on the card reader and click "**Adjust time(Receiver)**", then you just need to touch it to the lock one by one. it is convenient to set the lock time compare to use the card.

**>3.To Check the Lock Information:** if you forget the information of some of the door locks or want to check the lock information, you can put the data receiver on the card reader and click "**Read Lock Info(Receiver)**" and then touch to the lock. And then check the lock information(put the data receiver on the card reader again ), there is lock information appear in the area of "Read Card Info".

**>4.To Download the Opening Records from the Lock:** There are total 992pcs records(Including records of mechanical key). you can download with our data receiver. the operation is similar. (Refer to our **8.6** in the manual of software). This device is wireless communication to the lock, so please wait in patience when downloading the records.

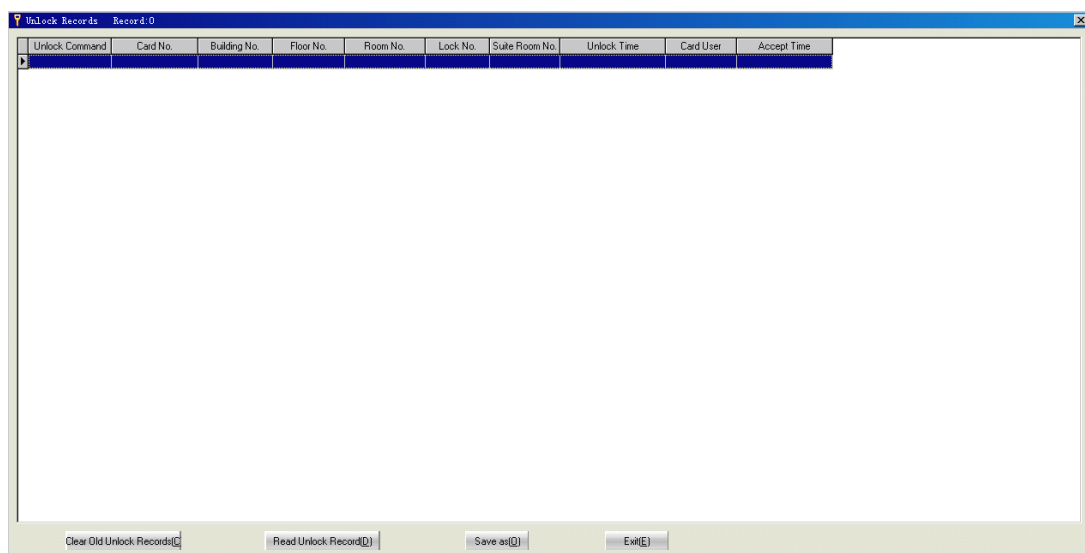
4.1 Click **"Read Lock Data(Receiver)"** in the above picture, put the data receiver on the card reader and then set the data receiver as one "Data Card". See below:

Notice: Data Area(MF1 card), this is only for Mifare card lock, do not make any change.



4.2 Touch the Data receiver to one lock(make sure the lock is opened with cards for some times), the green light will flash and it will check the records inside the lock and then download to the data receiver automatically. this will cost 1-2 minutes until there is one long sound for tip. as there are total 992 records inside,so please wait with patience as it is wireless communication between the lock with the data receiver.

4.3After one long sound to finish downloading to the data receiver, then put it to the card reader again. choose **"Unlock Records"** under the **"Special Card(L)"**. there is window as below:



4.4 Click **"Read Unlock Record(D)"**, and the light of data receiver will flash with sound for tip, after 1-2 minutes, there is one long sound tip, then there are opening records appear in the above window. You can save the records in Excel file. Or click **"Clear Old Unlock Record"** and to download the new records from another lock.